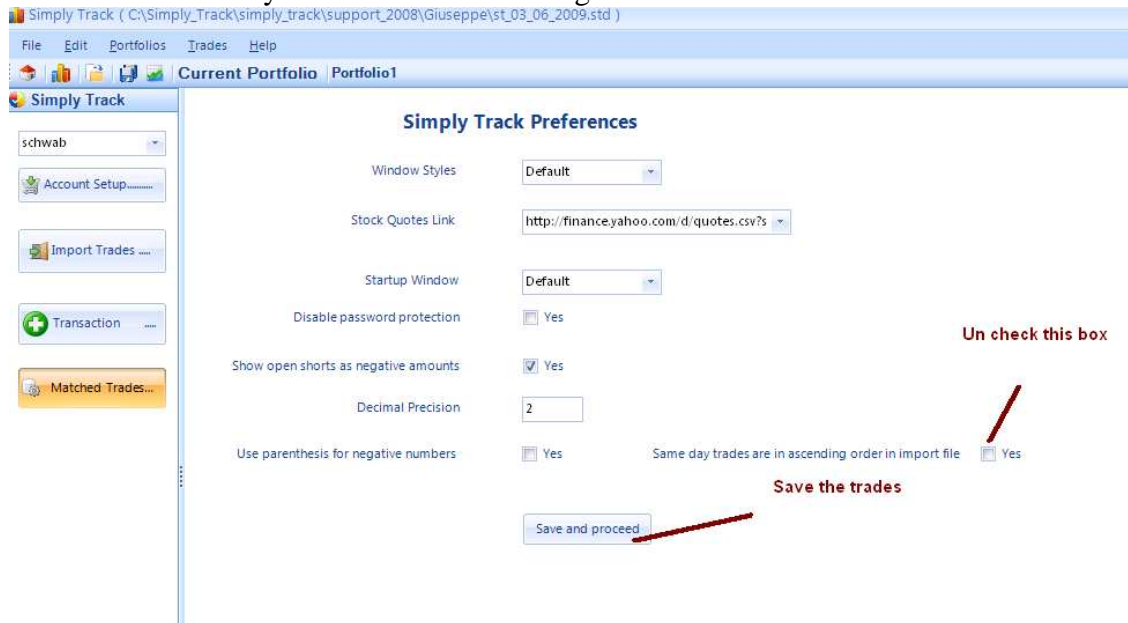


## Working with same day trades and Short Sells

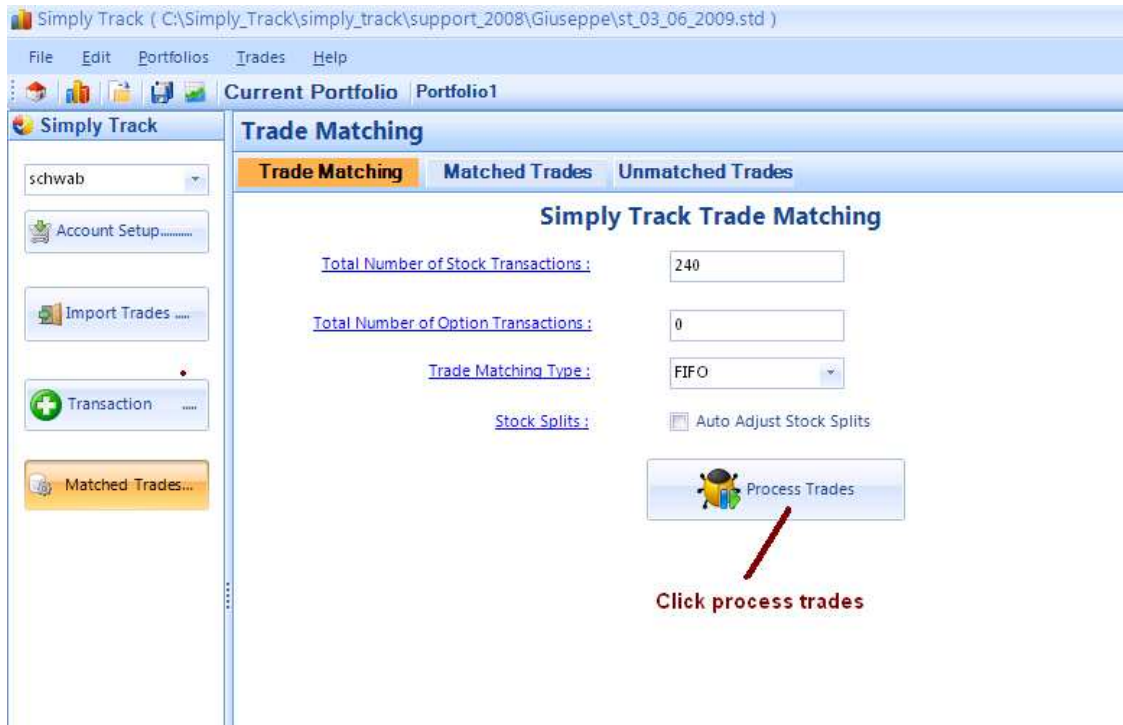
By default simply track assumes your trades are in ascending order by trade date. However some brokers provide trade history sorted by descending trade date. If trades are in descending trade date then during trade matching simply track matches some of the LONG trades as SHORT Sales. To overcome these issues follow these simple steps

Click on Edit->Preferences

Un check “Same Day Trades are in Ascending order” as shown below



After changing preferences, click on Save and Proceed and then click on Matched **trades** and **process trades** as shown below.



If you think there are more trade matching errors with same day trade you can fix manually by going into “Matched Stocks” tab as shown below and then right click and then select “Convert Short to Log” as shown below . After fixing these trades you can proceed to run the reports

Simply Track ( C:\Simply\_Track\simply\_track\support\_2008\Giuseppe\st\_03\_06\_2009.std )

File Edit Portfolios Trades Help

Current Portfolio Portfolio1

Simply Track

schwab

Account Setup.....

Import Trades .....

Transaction .....

Matched Trades...

### Matched Trades

Trade Matching **Matched Trades** Unmatched Trades

Matched Trades All **Matched Stocks** Matched Options

Seq_Num	Symbol	Shares	Cost Basis	Sale Proceeds	Date Acquired	Date Sold	Gain or Loss	Action
87	SPY	200	24342.95	24724.91	10/6/2008	9/19/2008	3381.96	Closed Short
88	SPY	100			10/13/2008	10/3/2008	1905.19	Closed Short
89	SPY	100			10/13/2008	10/3/2008	1905.18	Closed Short
90	DIA	100	10661.08	10674.46	10/3/2008	10/3/2008	13.39	Closed Long
91	DIA	100	10661.08	10674.46	10/3/2008	10/3/2008	13.38	Closed Long
92	INTC	150	2800.98	2408.50				Closed Long
93	INTC	149	2782.30	2392.45				Closed Long
94	INTC	1	18.67	16.05				Closed Long
95	IWM	200	10094.55	10491.79				Closed Short
96	DIA	200	17696.75	18035.34	10/17/2008	10/17/2008	338.59	Closed Short
97	SPY	200	18732.75	19227.14	10/17/2008	10/17/2008	494.39	Closed Long
98	MSFT	200	4784.75	4893.02	10/17/2008	10/17/2008	108.27	Closed Long
99	UNG	200	6066.75	6107.01	10/17/2008	10/17/2008	40.26	Closed Long
100	X	200	8523.75	8811.00	10/17/2008	10/17/2008	287.25	Closed Long
101	SPY	200	18920.00	18651.89	10/29/2008	10/22/2008	-268.11	Closed Short
102	SPY	200	18920.00	18067.89				
103	DIA	200	18739.80	18664.09				
104	PAA5	100	1207.00	1168.99				
105	PAA5	100	1207.00	1168.99	10/31/2008	10/31/2008	-38.01	Closed Long

Click here

Click this Option to fix the incorrectly matched short sales or long trades.

- Select All
- Delete Selected
- Convert Short to Long or Short to Long